

Original description in Deed Book 1232, page 1589, dated March 1980, from boundary survey, dated July 1979, by Robbie W. Neece, LS 396:

Beginning at the Northwest corner of Lot 17 in Wilson and Huttons First Addition to the City of Joplin, Jasper County, Missouri; Thence South 100.0 feet; Thence East 94.50 feet; Thence on a curve to the right with a radius of 153.0 feet on a chord of South 33° 12' East, 66.16 feet; Thence South 24° 38' East 104.0 feet; Thence West 63.70 feet; Thence South 100.0 feet; Thence East 95.0 feet; Thence South 24° 05' East, 128.60 feet; Thence along a curve to the left with a radius of 221.0 feet on a chord of South 55° 38' 30" East, 160.09 feet; Thence North 65° 42' 30" East, 171.33 feet; Thence North 24° 43' West, 536.06 feet; Thence West 321.66 feet to the point of beginning.

Joplin City Council Bill No. 3489 Ordinance No. 3371 filed in Deed Book 1703, page 2047

includes vacation of the following streets and alleys:

- "A" Street east of Main Street.
- Pennsylvania Avenue north of Second Street.
- alley beginning on the north line of Broadway Street and running north along the easterly side of the original town of Murphysburg, the easterly side of Murphysburg Town Company's Addition to Murphysburg and the easterly side of Wilson and Hutton's First Addition.

The City of Joplin reserves the right to construct and maintain underground utilities within the vacated streets and alleys.

Joplin Union Depot Company
 Plat Book 4
 Deed Book 1232, page 1194
 dated July 9, 1908
 required to have been filed in Deed Book 1232, page 179

Missouri Department of Natural Resources
 State Historic Preservation Office
 Deed Book 1566, page 1644
 Deed Book 1361, page 1084
 Deed Book 1361, page 1082
 Deed Book 1361, page 1080
 Deed Book 1310, page 1278
 Deed Book 1274, page 566
 Deed Book 1232, page 1589 (original conveyance)

Joplin Mining & Smelting Co.'s
 Third Addition to Joplin
 Plat Book A, page 162
 (MoSLS microfiche location: 097/0192B2)

Porter's Addition to Joplin
 Plat Book A, page 150
 (MoSLS microfiche location: 097/0191B2)

Porter's Addition to Joplin
 Plat Book A, page 150
 (MoSLS microfiche location: 097/0191B2)

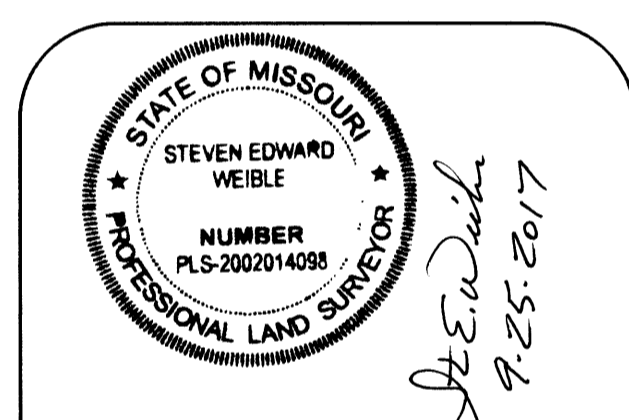
- 102 Found 1/2 inch Rebar, 12 inches long (found 08-29-2017).
- 103 Found 1/2 inch Rebar, 19 inches long (found 08-29-2017).
- 105 Found 5/8 inch Rebar, 4 inches deep (found 08-29-2017).
- 106 Found 1/2 inch Rebar with yellow plastic cap, marked "R. BILYEU LS 1986", 2 inches deep in gravel (found 08-29-2017).
- 108 Found 1/2 inch Rebar, 12 inches long, 6 inches deep (found 08-29-2017).
- 110 Found 1/2 inch Rebar, 2 inches deep (found 08-31-2017).
brick curb, East-Northeast 4.5 ft
wooden light pole, S45E 5.4 ft
- 117 Found 1/2 inch Rebar (found 08-31-2017).
utility pole, North 0.3 ft
corner of concrete retaining wall, South 5.1 ft
- 119 Found 1/2 inch Rebar, 14 inches long, top 5 inches bent (found 08-31-2017).
- 126 Found 5/8 inch Rebar, 4 inches deep (found 09-07-2017).
- 158 Removed Rebar # 108 and replaced with 5/8 inch x 30 inch long Rebar with 2 inch dia. aluminum cap (set 09-08-2017).
- 174 Set 5/8 inch x 30 inch long Rebar with 2 inch dia. aluminum cap (set 09-13-2017).
- 175 Removed Rebar # 119 and replaced with 5/8 inch x 30 inch long Rebar with 2 inch dia. aluminum cap (set 09-13-2017).
angle point in concrete retaining wall, West 3.1 ft
- 176 Set 5/8 inch x 30 inch long Rebar with 2 inch dia. aluminum cap (set 09-13-2017).
center of manhole, S04E 7.7 ft
center of storm sewer manhole, S30W 23.6 ft
- 182 Set "+" on concrete sidewalk, 0.16 ft South of the North edge and 0.17 ft East of expansion joint (set 09-13-2017).
corner of chain link fence, West-Northwest 1.0 ft
utility pole, Northeast 1.3 ft
- 183 Set 5/8 inch x 30 inch long Rebar with 2 inch dia. aluminum cap (set 09-13-2017).
corner of chain link fence, West 1.6 ft
- 188 Removed Rebar # 102 and replaced with 5/8 inch x 30 inch long Rebar with 2 inch dia. aluminum cap (set 09-14-2017).
southwest corner of building, N61E 9.6 ft
metal street light pole, S25W 10.9 ft
- 189 Removed Rebar # 103 and replaced with 5/8 inch x 30 inch long Rebar with 2 inch dia. aluminum cap (set 09-14-2017).
East edge of concrete sidewalk, West 0.9 ft
back of curb, West 9.1 ft
- 190 Set 1/2 inch x 24 inch long Rebar (no cap) (set 09-14-2017).
- 191 Set 1/2 inch x 24 inch long Rebar (no cap) (set 09-14-2017).
- 192 Set 1/2 inch x 24 inch long Rebar (no cap) (set 09-14-2017).
- 202 Set 1/2 inch x 24 inch long Rebar (no cap) (set 09-14-2017).
- 298 Set 1/2 inch x 24 inch long Rebar (no cap) (set 09-15-2017).

Missouri Coordinate System of 1983
 West Zone
 NAD 1983 (2011) Epoch: 2010

Point #	North (m)	East (m)
MOA2	57435.890	855505.238
MOCA	112181.730	862647.875
MOMO	83361.706	896061.255
105	102691.45	848873.24
106	102674.08	848883.51
110	102644.88	848895.83
117	102614.09	848904.08
126	102646.78	848842.76
158	102719.30	848943.52
174	102548.75	848958.01
175	102577.76	848918.79
176	102568.45	849006.36
182	102615.13	848875.14
183	102645.58	848876.27
188	102722.95	848845.59
189	102692.50	848844.46
190	102672.78	848962.90
191	102658.72	848968.72
192	102651.68	848951.88
202	102665.75	848946.02
298	102559.58	848935.68

Project Grid Factor = 0.99999001

Positional Uncertainty of coordinates relative to MOA2, MOCA and MOMO is less than ±0.03 m at the 68% confidence level.



s/n 747-00482-p1-1

PREPARED BY:
 Steven Edward Weible
 Professional Land Surveyor
 PLS 2002014098
 Missouri Department of Natural Resources
 Division of State Parks
 State Park Survey
 P.O. Box 176
 Jefferson City, MO 65102-0176
 (573) 368-2304

PREPARED FOR:
 Missouri Department of Natural Resources
 Division of State Parks
 State Historic Preservation Office

PROJECT DESCRIPTION & LOCATION:
 Boundary Survey
JOPLIN UNION DEPOT
 Part of Sections 2 & 3
 Township 27 North
 Range 33 West
 Fifth Principal Meridian
 City of Joplin
 Jasper County, Missouri

FIELD CREW:
 Steve Weible, PLS

DATE OF FIELDWORK:
 August 29-31, 2017
 September 7-8, 13-15, 2017
 Monumentation set
 September 8, 13-15, 2017

DRAWN BY: SEWeible JOB #: SHP1701

DATE OF DRAWING: 25 September 2017

SHEET: STATE PARK SURVEY #
 1 of 2 **747-00482**

Surveyor's Notes:

Source reference of property description:

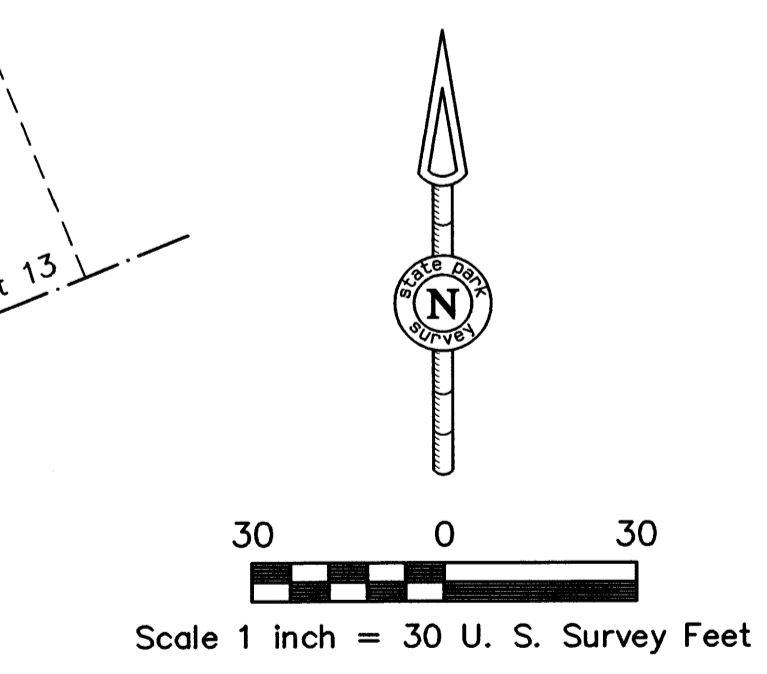
- Jasper County Deed Book 1232, page 1589
- Jasper County Deed Book 1274, page 566
- Jasper County Deed Book 1310, page 1080
- Jasper County Deed Book 1361, page 1082
- Jasper County Deed Book 1361, page 1082
- Jasper County Deed Book 1361, page 1084
- Jasper County Deed Book 1566, page 1644

Existing restrictions, covenants, reservations, leases, licenses and agreements are not represented hereon. Only those easements that were provided to or discovered by the Surveyor are shown. Other easements may exist. See sheet 2 for those features and utilities that were located.

Landowner information shown hereon does not represent a determination of title by the Surveyor.

The results presented hereon represent my professional opinion based upon information provided to me and discovered by me through field investigation and a search of the public records (which does not purport to have been exhaustive).

This survey has been performed in accordance with the Missouri Standards for Property Boundary Surveys for Urban Property, made effective June 30, 2017 (2 CSR 90-60 and 20 CSR 2030-16).



Bearings are Grid
 Missouri Coordinate System of 1983, West Zone
 Based on post-processed, static GPS observations on project traverse control using
 Continuously Operating Reference Stations
 MODOT ANDERSON CORS ARP
 MODOT CARTHAGE CORS ARP
 MODOT MONETT CORS ARP

NAD 1983 (2011) Epoch: 2010

- MOA2 (PID: DN6071) N 36°41'03.39336" W 094°26'18.24583"
- MOCA (PID: DL6014) N 37°10'39.16613" W 094°21'27.24304"
- MOMO (PID: DM4682) N 36°55'00.48602" W 093°58'59.01557"

n/f = now or formerly
 MoSLS = Missouri State Land Survey



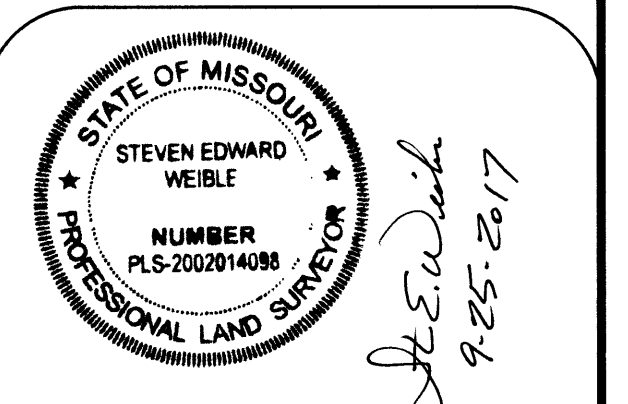
Surveyor's Notes:

An attempt was made to locate all prominent features, but only those features shown were located. Other features may exist that are not shown.

Only those utilities that are shown were located. Other utilities may exist that are not shown.

Underground utilities were not located.

The Surveyor shall not be held liable for any feature or utility not represented hereon.



s/n 747-00482-p1-2

PREPARED BY:
 Steven Edward Weible
 Professional Land Surveyor
 PLS 2002014098
 Missouri Department of Natural Resources
 Division of State Parks
 State Park Survey
 P.O. Box 176
 Jefferson City, MO 65102-0176
 (573) 368-2304

PREPARED FOR:
 Missouri Department of Natural Resources
 Division of State Parks
 State Historic Preservation Office

PROJECT DESCRIPTION & LOCATION:

 Location of Improvements
JOPLIN UNION DEPOT
 Part of Sections 2 & 3
 Township 27 North
 Range 33 West
 Fifth Principal Meridian
 City of Joplin
 Jasper County, Missouri

FIELD CREW:
 Steve Weible, PLS

DATE OF FIELDWORK:
 August 29-31, 2017
 September 7-8, 13-15, 2017
 Monumentation set
 September 8, 13-15, 2017

DRAWN BY: SEWeible JOB #: SHP1701

DATE OF DRAWING: 25 September 2017

SHEET: STATE PARK SURVEY #
 2 of 2 **747-00482**